



# MS270P 27"

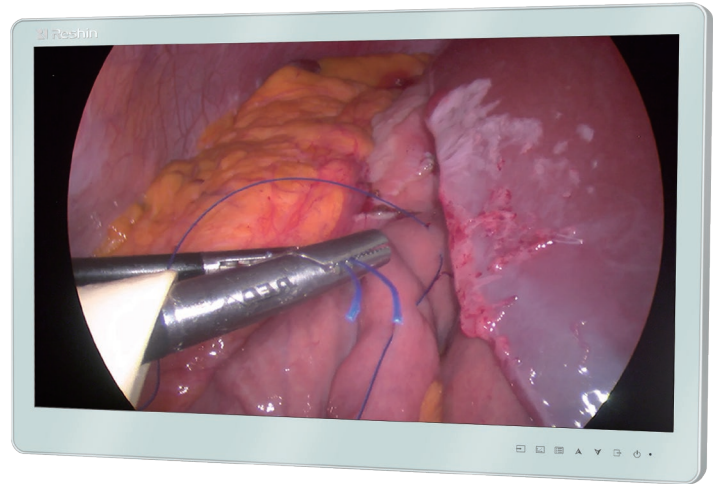
27" surgical medical display is equipped with 1920x1080 IPS HD screen and high transmittance AR anti-glare protective front glass. With complete signal interfaces, it can be applied to a variety of image display. To meet the high-level purification requirement in operating room, it is designed with full-mirror appearance, which can effectively prevent dust and liquid pollution during operation. Its standard installation structure is fully compatible with operating room construction.

# LCD



High Definition

# ENDOSCOPY HD LCD VIDEO MONITOR



### SPECIFICATIONS

Display Size	27"
Color	1.07B
Resolution	1920×1080
Display Ratio	16 : 9
Brightness	1000 cd/m <sup>2</sup>
Contrast Ratio	1000 : 1 (TYP)
Viewing Angle	178°/178°
Response Time	14ms (TYP)
Input Ports	VGA/ DVI/ S-VIDEO/ VIDEO/ BNC(SDI)
Output Ports	DVI/ BNC(SDI)
Power Supply	DC 24V
Power Consumption	≤80W max
MTBF	>30,000h
Structural Appearance	White Metal Shell With Protective Front Glass
Dimension	647*409*63 mm (W*H*D) (Without Stand)
Weight	8.5±0.5 kg (Without Stand)
Installation Standard	VESA 100x100 mm
Application	Digital Video-endoscope System / ENT
Certifications	CE



True color reproduction



LED Backlight



Exquisite and real image



Full View  
Displaying Panel



Comply with International  
Medical Standard