

# Schuco Suction Pump

## MODEL NUMBERS: 130, 230 & 230A OIL-LESS SCHUCO-VAC FOR YOUR CLOSEST SERVICE CENTER LOCATION CONTACT THE FACTORY

The Model Number of your unit will be found on a plate fastened to the motor housing always mention This Model Number when communicating with us regarding this unit or when ordering repair parts

### IMPORTANT SAFEGUARDS

When using electrical products, especially when children are present, basic safety precautions should always be followed, including the following:

#### READ ALL INSTRUCTIONS BEFORE USING

**DANGER** - To reduce risk of electrocution:

- 1 Always unplug this product immediately after using.
2. Do not use while bathing
3. Do not place in or store product where it can fall or be pulled into a tub or sink
- 4 Do not place or drop into water or other liquid.
5. Do not reach for a product that has fallen into water.  
Unplug immediately.

**WARNING** - To reduce risk of burns, electrocution, fire or injury to persons

- 1 A product should never be left unattended when plugged in
- 2 Close supervision is necessary when this product is used by, on, or near children or invalids.
- 3 Use this product only for intended use as described in this manual do not use attachments not recommended by the manufacturer
4. Never operate this product if it has a damaged cord

or plug, if it is not working properly, if it has been dropped or damaged, or dropped into water Return the product to a service center for examination and repair.

- 5 Keep the cord away from heated surfaces
6. Never block the air openings of this product or place it on a soft surface, such as a bed or couch, where the air openings may be blocked. Keep the air openings free of lint, hair, and the like.
7. Never use while sleeping or drowsy.
8. Never drop or insert any object into any openings.
9. Do not use outdoors or operate where aerosol (spray) products are being used or where oxygen is being administered
- 10 Connect this product to a properly grounded outlet only See Grounding Instructions

**CAUTION:** Risk of electric shock do not disassemble. Refer servicing to qualified service personnel.

**“CAUTION: Federal law restricts this device to sale by or on the order of a physician.”**

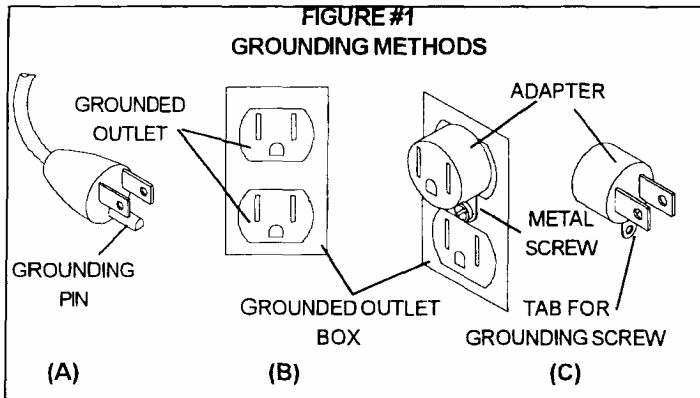
**DANGER: Save These Instructions.**

**NOTICE: SAVE THESE INSTRUCTIONS**

## GROUNDING INSTRUCTIONS

This product should be grounded. In the event of an electrical short circuit, grounding reduces the risk of electric shock by providing an escape wire for the electric current. This product is equipped with a cord having a grounding wire with a grounding plug. The plug must be plugged into an outlet that is properly grounded.

**DANGER** - Improper use of the grounding plug can result in a risk of electric shock.



If repair or replacement of the cord or plug is necessary, do not connect the grounding wire to either flat blade terminal. The wire with insulation having an outer surface that is green with or without yellow stripes is the grounding wire.

Check with a qualified electrician or serviceman if the grounding instructions are not completely understood, or if in doubt as to whether the product is properly grounded.

This product is for use on a nominal 120 V circuit and has a grounding plug that looks like the plug illustrated in (sketch A) in Figure #1. A temporary adapter, which looks like the adapter illustrated (sketches B and C), may be used to connect this plug to a 2-pole receptacle as shown in (sketch B) if a properly grounded outlet is not available. The temporary adapter should be used only until a qualified electrician can install a properly grounded outlet as shown in sketch A. The green colored rigid ear, lug, and the like extending from the adapter must be connected to a permanent ground such as a properly grounded outlet box cover. Whenever the adapter is used, it must be held in place by the screw.

**EXTENSION CORDS** - If necessary to use an extension cord, use only a 3 wire extension cord that has a three-blade grounding plug, and a 3-slot receptacle that will accept the plug on the product. Make certain your extension cord is in good condition. Make certain your extension cord wire size is not less than 18 gauge for 25 feet, 16 gauge for 50 feet, and 14 gauge for 100 feet.

**BEFORE OPERATING** - Run compressor for a few minutes as a check to see if it is operating properly.

## OPERATING PROCEDURES

**WARNING: PROPER USE OF THIS PRODUCT IS NECESSARY TO AVOID PHYSICAL HARM. IMPROPER USE CAN CAUSE PERSONAL INJURY AND/OR TISSUE DAMAGE. THIS PRODUCT SHOULD NOT BE USED UNLESS THE OPERATOR HAS BEEN INSTRUCTED BY A PHYSICIAN OR OTHER QUALIFIED HEALTH CARE PROFESSIONAL.**

- 1 Check to see that the ON/OFF switch is in the OFF position. Plug power cord into electrical outlet.
- 2 Turn ON/OFF switch to ON position.
- 3 The control knob will adjust the vacuum. As the knob is turned clockwise the vacuum will increase, as the knob is turned counterclockwise the vacuum will decrease. Inches of vacuum will register on the gauge. Use only the vacuum setting directed by your physician or qualified health care professional. Using a setting higher than instructed may lead to a life-threatening situation.
- 4 The collection jar should be emptied after every use or when the fluid level reaches the "SAFE FULL" level during use. To empty the jar, turn the unit OFF and allow the vacuum to return to zero (0). Remove tubing from vacuum port on lid, lift out of support bracket, remove lid and empty jar.

## CLEANING AND STERILIZATION PROCEDURES FOR JAR, LID AND OTHER COLLECTION PARTS

It is recommended that the jar, lid assembly and tubing be cleaned after every use. To ensure the longest life for these parts the following procedures must be followed:

Clean the 1200cc autoclavable jar, lid assembly, gasket, seal washer, small tube, float guide and float thoroughly with mild soap. Rinse thoroughly with clean water and dry thoroughly.

Place parts in autoclave as follows ensuring the parts are not touching:

- Jar with open end down.
- Float and float guide upright with large ends down.
- Gasket, seal washer and small tube can be placed in a gusset pouch prior to autoclaving.

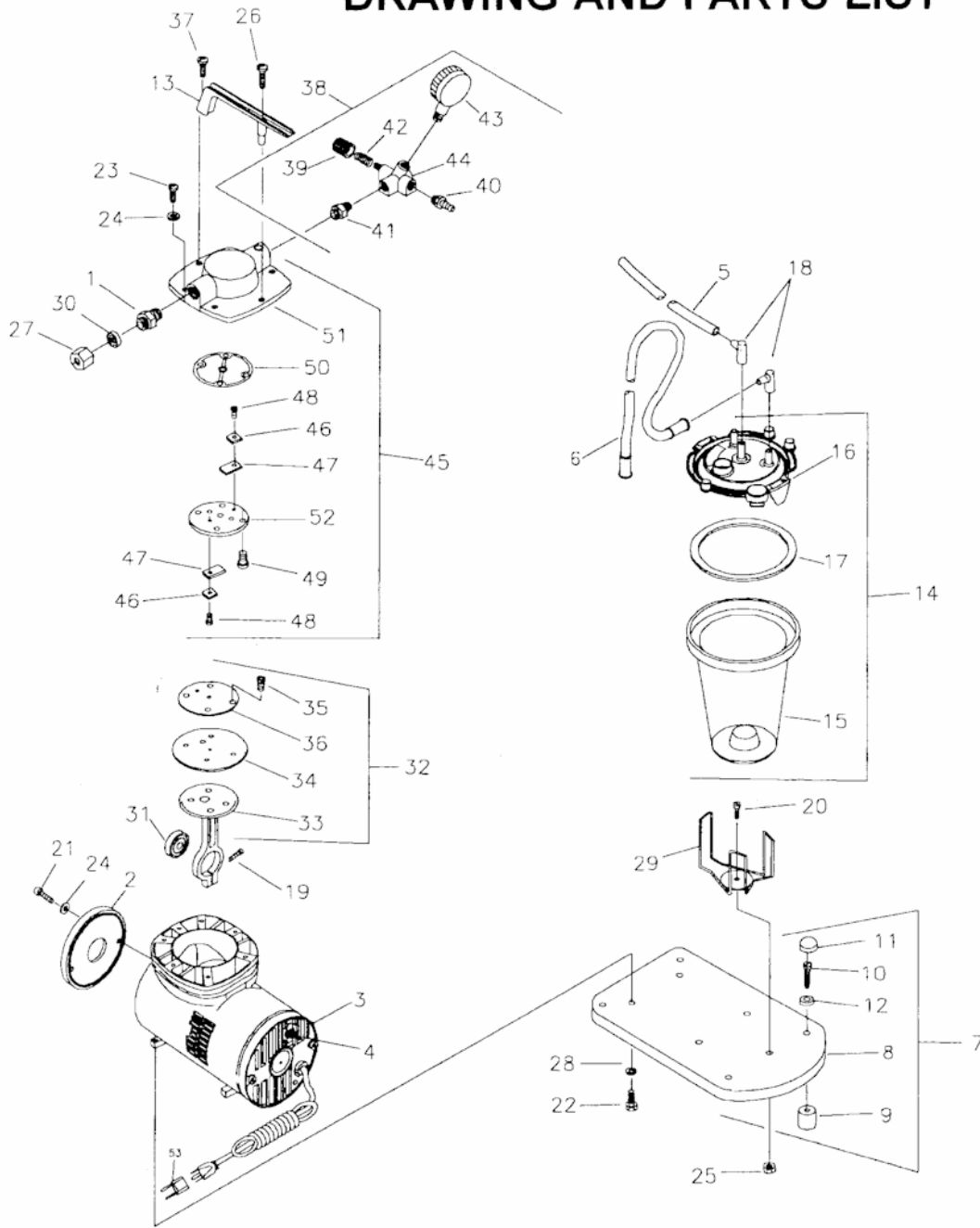
Autoclave for 3 to 5 minute cycle at 270°F (132°C)

In lieu of autoclave sterilization, the above parts can be soaked in an activated dialdehyde solution.

**Tubing** - Rinse with clear hot tap water, replace as needed or between patients.

For contagious matter, consult with a physician or qualified health care professional.

# DRAWING AND PARTS LIST



Item No.	Part No.	Component Part	Description	Qty
1	807144		Hose Connector	1
2	614361-512		Front Cover	1
3	662005-512		Motor End Cap Assembly	1
4		602489	Switch (On-Off)	1
5	615736		Tubing (Bottle to Fitting) - 14"	1
6	615474		Tube w/Connectors - 72"	1
7	616272-516		Base & Bumper Assy	1
8		616205-516	Base	1
9		624163	Bumper	4
10		625102	Screw - Bumper	4
11		638050	Snap Cap	4
12		662255	Base - Snap Cap	4
13		629152	Handle	1
14		620004	Lid, Float & Jar Assembly	1
15		614924	Jar - 1200cc	1
16		614947	Lid & Float Assembly	1
17		638507	Gasket - Seal	1
18		624644	Elbow - Jar	2

Item No.	Part No.	Component Part	Description	Qty
19		625114	Screw - Connecting Rod	1
20		625331	Screw - Bottle Holder	1
21		625337	Screw - Front Cover	2
22		625400	Screw - Compressor Mounting	4
23		625444	Screw - Head	4
24		626014	Washer - Head & Front Cover	8
25		626767	Nut - Bottle Holder	1
26		625606	Screw - Handle	1
27		626455	Nut - Filter	1
28		626509	Lockwasher - Compressor to Base	4
29		629149	Bottle Holder	1
30		641020	Filter/Silencer	1
31		646065	Ball Bearing	1
32		666193	Connecting Rod Assembly	1
33		607333	Connecting Rod	1
34		606144	Diaphragm	1
35		635540	Screw - Hold Down Plate	1
36		654967	Hold Down Plate	1

Item No.	Part No.	Component Part	Description	Qty
37		625436	Screw - Handle	1
38		669015-512	Control Valve Assembly	1
39		622026	Control Knob	1
40		624824	Hose Fitting (Barbed)	1
41		624848	Connector Fitting	1
42		627055	Spring - Control Knob	1
43		638312	Gauge Vacuum	1
44		633767-512	Control Body	1
45		669297-512	Head & Valve Plate Assembly	1
46		617045	Valve Keeper Strip	2
47		621102	Valve Flapper - Intake & Exhaust	2
48		625160	Screw - Valve Flapper	2
49		625606	Screw - Valve Plate	5
50		633560	O-Ring Gasket	1
51		661663-512	Head	1
52		662156	Valve Plate	1
53		624160	Adapter - Grounding	1